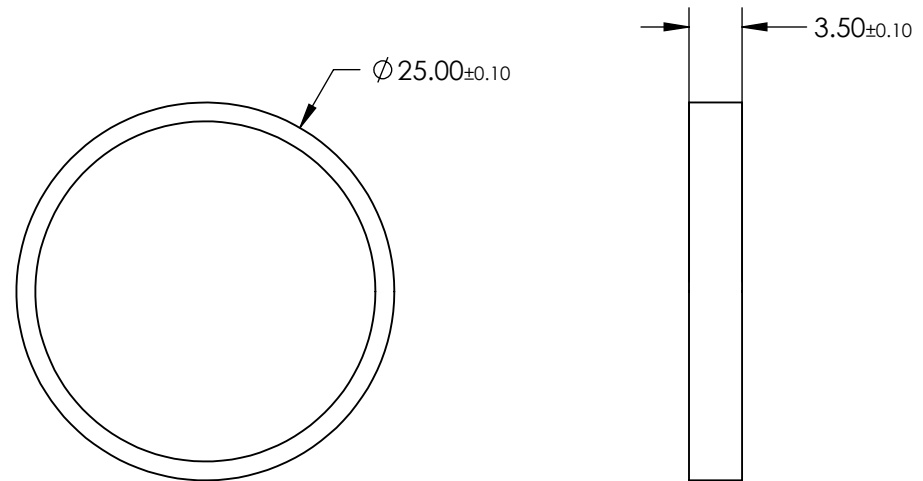
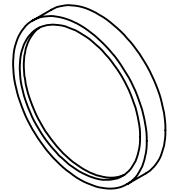


NOTES:

1. SUBSTRATE:  
OPTICAL GRADE GLASS
2. BANDWIDTH: 14nm
3. BLOCKING WAVELENGTH RANGE: 330 - 900nm
4. MINIMUM TRANSMISSION (%): >93 @ 613 - 627nm
5. ROHS COMPLIANT

NOTE: ARROW ON RING INDICATES PREFERRED DIRECTION OF PROPAGATION OF LIGHT.



**FOR INFORMATION ONLY:  
DO NOT MANUFACTURE  
PARTS TO THIS DRAWING**

SPECIFICATIONS SUBJECT TO CHANGE WITHOUT NOTICE  
DIMENSIONS ARE FOR REFERENCE ONLY

	S1	S2
SHAPE	PLANO	PLANO
CONE HALF ANGLE (°)	7	7
OPTICAL DENSITY OD (AVERAGE)	>5	>5
SURFACE QUALITY	80 - 50	80 - 50
CLEAR APERTURE	$\geq \varnothing 10.00$	$\geq \varnothing 10.10$
BEVEL	PROTECTED AS NEEDED	PROTECTED AS NEEDED



ALL DIMS IN

mm

**EO**® **Edmund Optics**®

TITLE

620nm CWL, >OD5, 20nm FWHM Bandpass Filter, 25mm Dia.

DWG NO

78438

SHEET  
29 OF 52