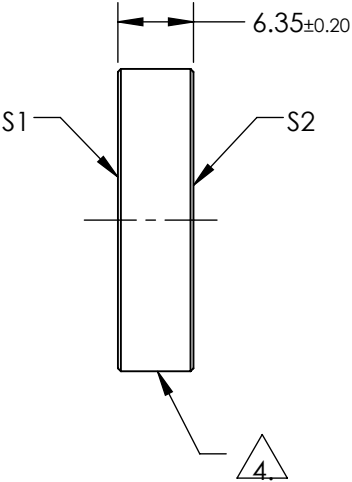
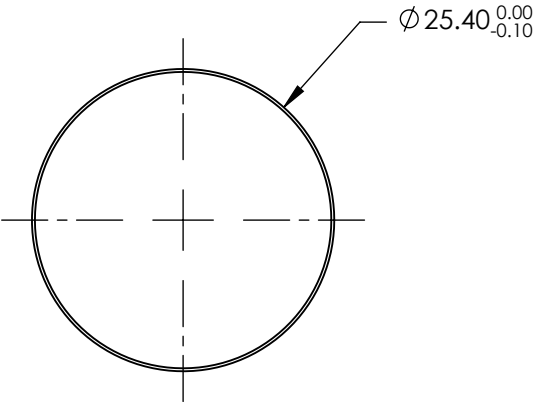



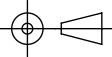
NOTES:

- 1. SUBSTRATE:
FUSED SILICA
- 2. SURFACE S2 TO BE PARALLEL TO S1 TO WITHIN <3 ARCMIN
- 3. COATING (APPLY ACROSS COATING APERTURE)
S1: DIELECTRIC
R(ABS) ≥ 99.50% @ 635, 670, & 1064nm
- S2: NONE
- 4. FINE GRIND SURFACE
- 5. POWER, IRREGULARITY, SURFACE QUALITY, AND COATING SPECIFICATIONS APPLY ACROSS CLEAR APERTURE
- 6. ROHS COMPLIANT



**FOR INFORMATION ONLY:
DO NOT MANUFACTURE
PARTS TO THIS DRAWING**

SPECIFICATIONS SUBJECT TO CHANGE WITHOUT NOTICE
DIMENSIONS ARE FOR REFERENCE ONLY

	S1	S2	 Edmund Optics®			
SHAPE	PLANO	PLANO				
SURFACE ACCURACY P-V AT 632.8nm	λ/10	N/A				
SURFACE QUALITY	10-5	COMMERCIAL POLISH	ALL DIMS IN	mm	TITLE	Ø25.4mm x 6.35mm 635-670/1064nm DUAL BAND LASER MIRROR
CLEAR APERTURE	Ø22.86	N/A			DWG NO	28978
BEVEL	PROTECTIVE AS NEEDED	PROTECTIVE AS NEEDED				SHEET 1 OF 1