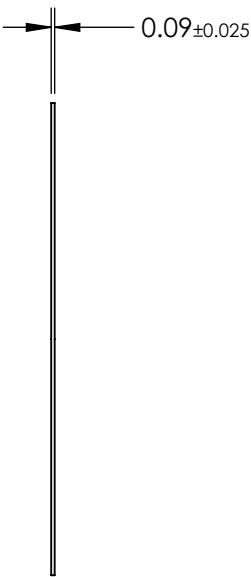
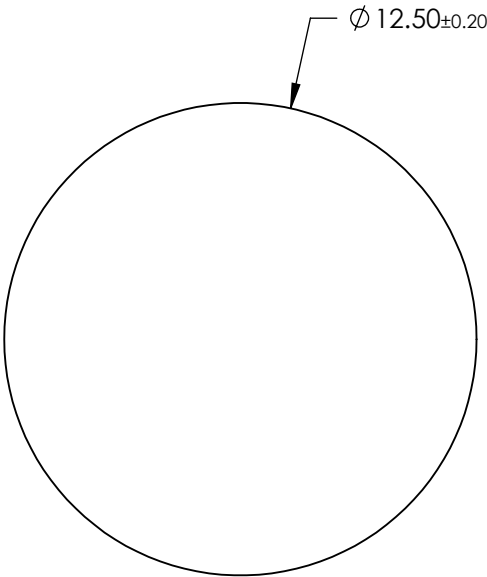
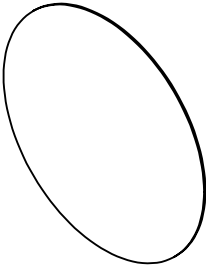


- NOTES:
- 1. SUBSTRATE: SODIUM SILICATE GLASS DOPED WITH SILVER NANOPARTICLES
 - 2. COATING: Single-Side AR
 - 3. TYPICAL ENERGY DENSITY LIMIT: 10 W/cm2
 - 4. EXTINCTION RATIO: >10,000:1
 - 5. WAVELENGTH RANGE: 1500-1600
 - 6. ROHS COMPLIANT



**FOR INFORMATION ONLY:
DO NOT MANUFACTURE
PARTS TO THIS DRAWING**

SPECIFICATIONS SUBJECT TO CHANGE WITHOUT NOTICE
DIMENSIONS ARE FOR REFERENCE ONLY

	S1	S2
SHAPE	PLANO	PLANO
SURFACE QUALITY	40 - 20	40 - 20
TRANSMISSION (%)	>92	>92
ACCEPTANCE ANGLE	±20°	±20°
BEVEL MAX FACE	PROTECTED AS NEEDED	PROTECTED AS NEEDED

THIRD ANGLE
PROJECTION

ALL DIMS IN

mm

 **Edmund Optics®**

TITLE

Ultra-Thin Polarizer, 1550nm, 12.5mm Dia,
Single AR

DWG NO

26648

SHEET
7 OF 12