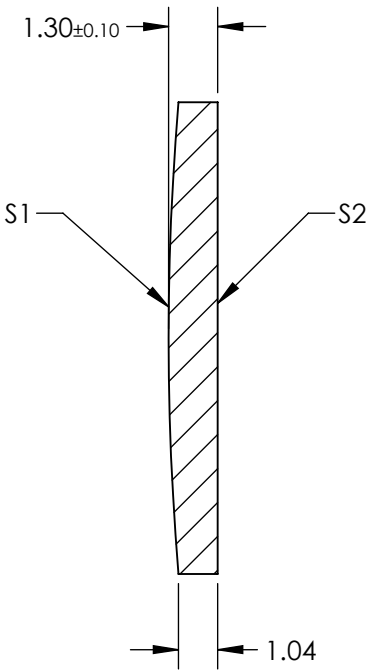
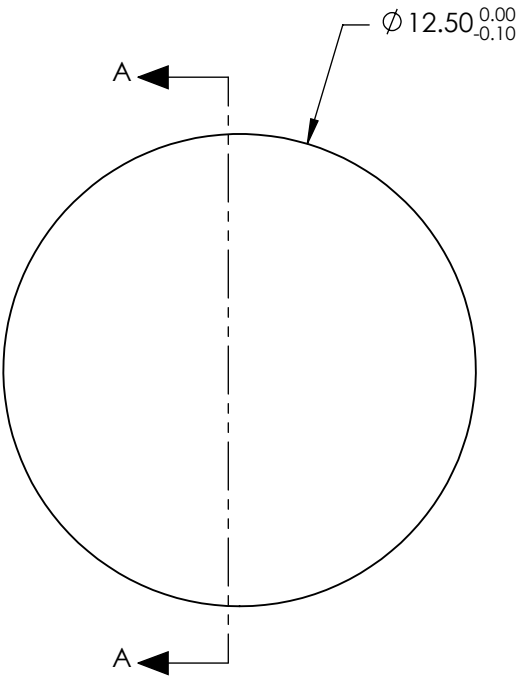

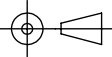


- NOTES:
- 1. SUBSTRATE: GERMANIUM
  - 2. COATING (APPLY ACROSS CLEAR APERTURE)  
S1 & S2: Ravg <5.0% @ 3 - 12µm
  - 3. EDGES: FINE GROUND
  - 4. CENTERING: <3 ARMIN
  - 5. ROHS COMPLIANT



**FOR INFORMATION ONLY:**  
**DO NOT MANUFACTURE**  
**PARTS TO THIS DRAWING**

SPECIFICATIONS SUBJECT TO CHANGE WITHOUT NOTICE  
DIMENSIONS ARE FOR REFERENCE ONLY

|                 | S1                  | S2                  |  Edmund Optics® |  |        |       |
|-----------------|---------------------|---------------------|--|--|--------|-------|
| SHAPE           | CONVEX              | PLANO               |  |  |        |       |
| RADIUS          | 75.1                | ∞                   |                 | TITLE<br>12.5mm Dia. x 25mm FL, 3 - 12µm Coated, Ge<br>Plano-Convex Lens |        |       |
| SURFACE QUALITY | 60 - 40             | 60 - 40             |  |  |        |       |
| CLEAR APERTURE  | Ø 11.25             | Ø 11.25             |  |  |        |       |
| BEVEL           | PROTECTED AS NEEDED | PROTECTED AS NEEDED |  |  |        |       |
|                 |                     |                     | ALL DIMS IN  | mm   | DWG NO | 25565 |
|                 |                     |                     | SHEET<br>10 OF 12  |  |        |       |