

NOTES:

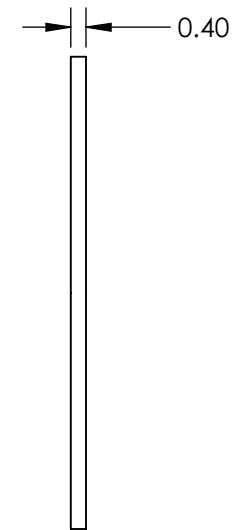
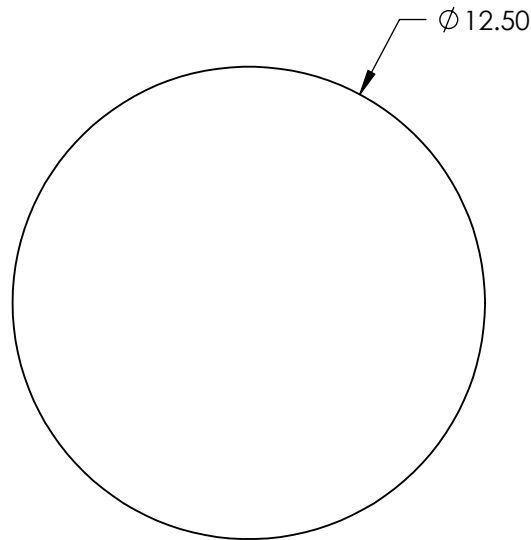
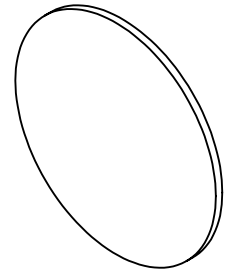
1. COATING

PERFORMANCE SPECIFICATIONS:

CWL: 808nm  
TRANSMISSION %: >85

2. POWER, IRREGULARITY, AND SURFACE QUALITY SPECIFICATIONS  
APPLY ACROSS CLEAR APERTURE

3. ROHS COMPLIANT

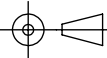


**FOR INFORMATION ONLY:  
DO NOT MANUFACTURE  
PARTS TO THIS DRAWING**

SPECIFICATIONS SUBJECT TO CHANGE WITHOUT NOTICE  
DIMENSIONS ARE FOR REFERENCE ONLY

**EO**® Edmund Optics®

	S1	S2
SHAPE	PLANO	PLANO
CLEAR APERTURE	Ø 11.25	Ø 11.25

THIRD ANGLE PROJECTION 

ALL DIMS IN mm

TITLE	Everix Ultra-Thin OD 4 Notch Filter, 808nm, 12.5mm Diameter	
DWG NO	23684	SHEET 13 OF 15