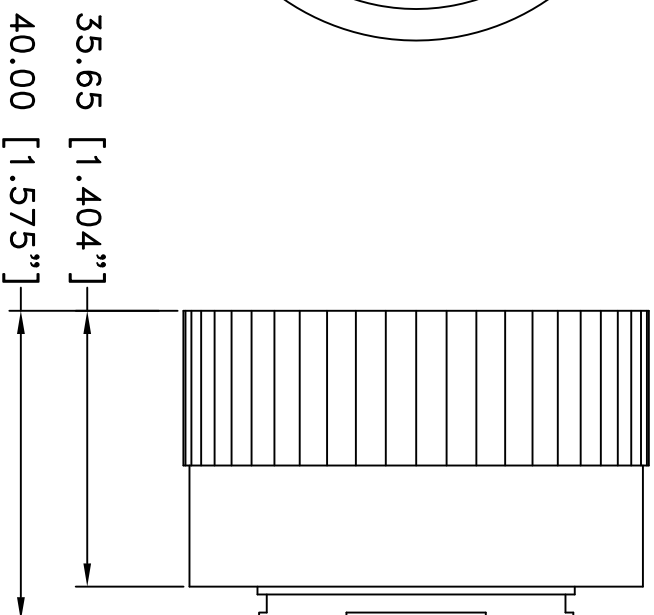
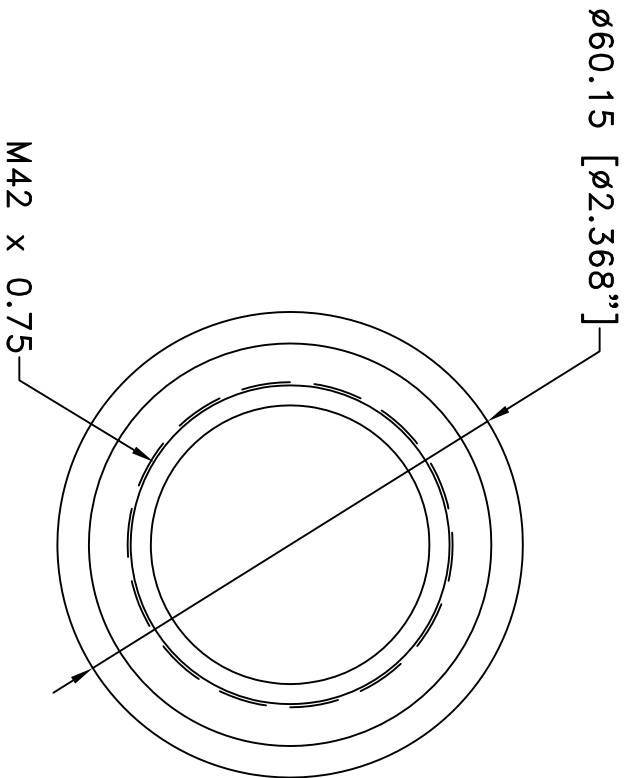


This drawing is for informational purposes only.
 No other rights or privileges are granted or implied.

REVISIONS				
ZONE	REV	DESCRIPTION	DATE	APPROVED



- NOTES:**
1. SURFACE ANODIZED BLACK.
 2. MATL.: ALUMINUM

ALL DIM ARE mm
 [inches] AND ARE FOR
 REFERENCE ONLY AND
 ARE SUBJECT TO
 CHANGE.

INFINITY Photo-Optical Company
www.infinity-usa.com

**T2 ADAPTER
 OLYMPUS**

Date: 01/28/21 MB	SIZE A	FSCM NO.	DWG NO.	770 566	REV -
Modified:	SCALE NONE		-	SHEET 1 OF 1	