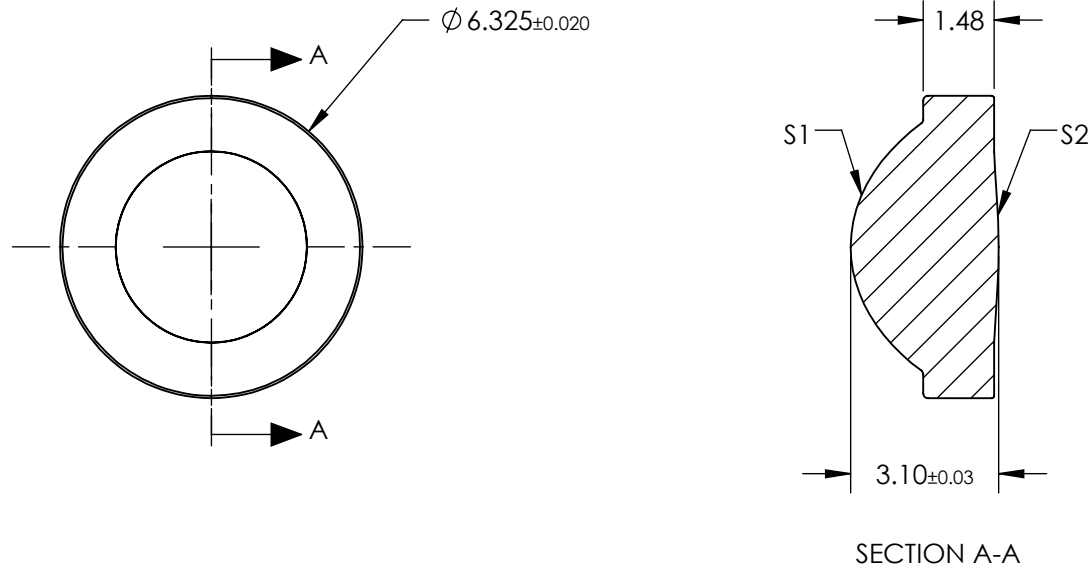



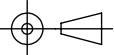
**NOTES:**

1. SUBSTRATE:  
D-ZK3
2. NUMERICAL APERTURE: 0.64
3. COATING  
S1 & S2: R(ABS) < 1.0% @ 1050 - 1600nm
4. FOCAL LENGTH TOLERANCE: ±1%
5. TRANSMITTED WAVEFRONT ERROR ( $\lambda$ , RMS): < 0.080



**FOR INFORMATION ONLY:  
DO NOT MANUFACTURE  
PARTS TO THIS DRAWING**

SPECIFICATIONS SUBJECT TO CHANGE WITHOUT NOTICE DIMENSIONS ARE FOR REFERENCE ONLY

	S1	S2	EFL	4.03	 <b>Edmund Optics®</b>
			BFL	2.68	
SHAPE	CONVEX	CONVEX	THIRD ANGLE PROJECTION 	TITLE	0.64 NA 4.03mm FL 1050-1600nm AR COATED, MOLDED ASPHERIC LENS
SURFACE QUALITY	40-20	40-20		DWG NO	87163
CLEAR APERTURE	Ø5.10	Ø5.10		ALL DIMS IN	mm
BEVEL MAX	PROTECTIVE AS NEEDED	PROTECTIVE AS NEEDED			SHEET 1 OF 1